

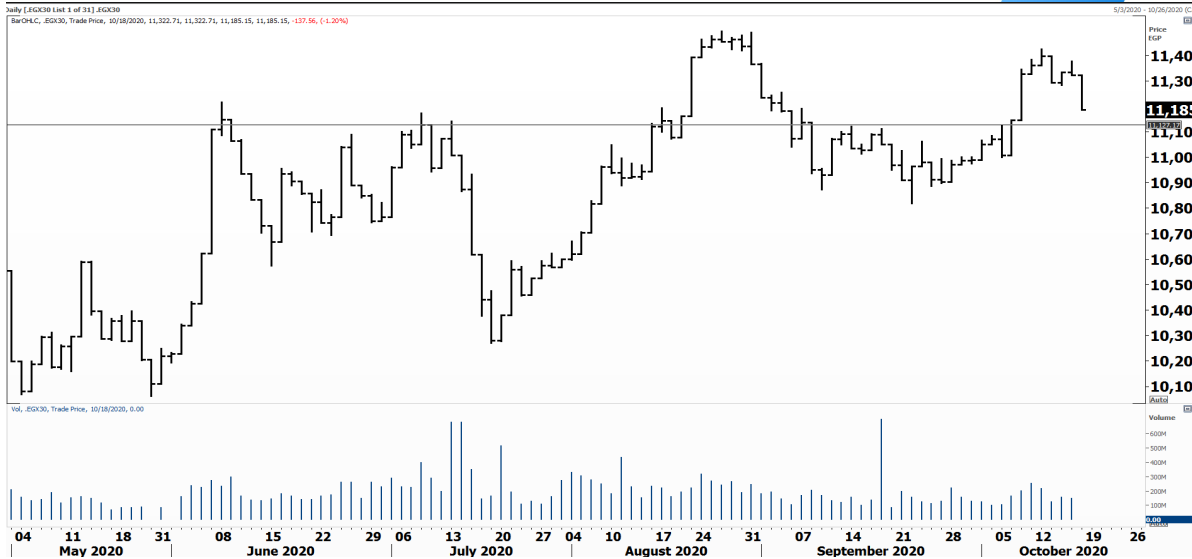


PIONEERSECURITIES

TECH TO THE POINT

19-Oct-2020

This report must be read with the disclaimer
on the last page



Last	11,185.15
High Today	11,322.71
Low Today	11,185.15
Volume	M 92.631
First Support	11,100.00
Second Support	10,800.00
First Resistance	11,500.00
Second Resistance	12,000.00
Stop Loss	11,100.00
HISTORICAL RETURN %	
1 WEEK	-1.54%
1 MONTH	1.21%
1 QUARTER	8.79%
1 YEAR	-21.26%
YTD	-19.89%

Analysis

From the start of yesterday's session the market declined sharply, violating the minor support of 11,270, and closing almost at our second target that lies at 11,100. Based on yesterday's strong selling pressure, the EGX 30 can retest the 10,800 level which is considered as a very important support that should not be breached.

As we mentioned before, a break below 10,800 will be bearish from an intermediate-term perspective and our target will be much lower; even below 10,200. We are not expecting this scenario to take place, but we should be ready in case any scenario occurs.

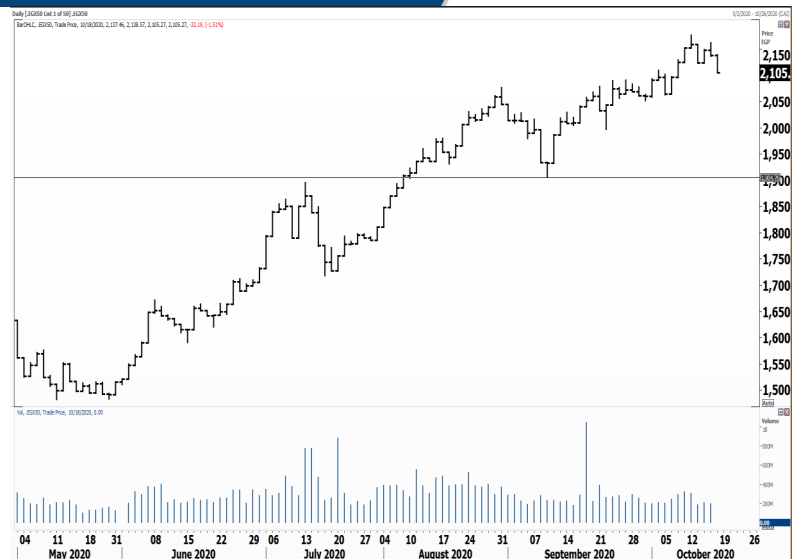
For now, we will be waiting on the sidelines and see where the current decline will stop.

Egyptian Exchange Equal Weight Index .EGX 50


Analysis

Broke its support and triggered short-term stops. We have mentioned that a break below 2,120 triggers stops. Now the market is in a corrective phase that can go to lower levels.


We will be looking at 2,000 first as a potential support. A rebound from there will trigger a new buy signal. On the other hand, if this correction continues it can reach 1,900, which is our major support to watch.



Resistance


ECAP  Broke 18.2 upwards but still needs confirmation today. If ECAP maintains itself above 18.2 it will probably reach 19.8-20 where a stronger resistance will appear.


Support

HRHO  Violated 13.5 and closed below it. The 12.65 level is the next support. A rebound should occur from there; if HRHO breaks below 12.65 a clear sell will be triggered.


Testing

Support

MNHD  The 3.6 level is the support for MNHD. The stock witnessed a strong rise recently but retraced almost all of its rise since the breakout. If MNHD breaks below 3.6 it will retest its bottom once again.

ORHD  Those who are holding positions can place their stop below 3.8. On the other hand, we will not recommend stepping in unless the 4.2 level is clearly broken upwards.

Resistance

SWDY  The stock did not confirm the breakout above 7.8-7.9 as it traded below it yesterday. We believe, however, that if it trades back above this level it will be able to witness a strong rise. We should wait for a confirmation of the breakout first.

ORAS  The 73 level is still serving as resistance. If ORAS succeeds to break above this level, a new buy signal will be triggered with a target around 76-77.

Symbol	S. Description	Last	Support 1	Support 2	Resistance 1	Resistance 2	Trend	Recommendation	Stop Loss/ Re-Entry
COMI.CA	COM INTL BK/d	66.60	66	63	68.5	70.2	↔	Hold	66
EAST.CA	EASTERN CO/d	12.14	12.00	11.60	13.00	13.60	↔	Hold	11.60
EKHO.CA	EGYPT KUWAIT H/d	1.05	\$1.04	\$1.02	\$1.10	\$1.12	↔	Hold	\$1.04
HRHO.CA	EFG HERMES HOL/d	13.12	12.65	12.00	14.00	14.50	↔	Hold	12.65
TMGH.CA	TALAT MOSTAFA/d	6.60	6.5	6.2	6.94	7.15	↔	Hold	6.20
CLHO.CA	CLEOPATRA HOSPITAL COMPANY	4.79	4.70	4.53	5.15	5.22	↔	Hold	4.70
SWDY.CA	ELSWEDY ELECTR/d	7.85	7.65	7.48	8.21	8.35	↔	Hold	7.48
ETEL.CA	TELECOM EGYPT/d	12.20	11.80	11.40	12.60	13.00	↔	Hold	11.40
ISPH.CA	IBNSINA PHARMA	5.88	5.88*	5.30	6.50	6.80	↓	P.Sell	6.50
CIRA.CA	CAIRO INVESTMENT & REAL ESTATE/d	13.95	13.00	12.50	14.00	15.00	↔	Hold	12.50
JUFO.CA	JUHAYNA FOOD I/d	6.60	6.2	5.5	6.75	7	↓	P.Sell	7
CIEB.CA	CREDIT AGRICOL/d	26.98	25.30	24.50	28.00	30.00	↔	Hold	24.50
OCDI.CA	6TH OCT DEV IN/d	12.81	12.80	12.33	13.90	14.40	↑	Hold	12.33
MNHD.CA	NASR CITY HOUS/d	3.76	3.70	3.50	4.10	4.50	↑	Hold	3.50
EFID.CA	EDITA /d	9.26	9.10	8.90	10.50	11.35	↔	Hold	8.90
HELI.CA	HELIOPOLIS/d	6.54	6.35	6.07	7.10	7.60	↑	Hold	6.70
ORWE.CA	ORIENTAL WEAVERS /d	6.22	6.18	5.77	6.44	6.62	↑	Hold	5.77
PHDC.CA	PALM HILL DEV /d	1.42	1.4	1.34	1.52	1.59	↔	Hold	1.4
CCAP.CA	CITADEL CAPITA/d	1.55	1.53	1.43	1.68	1.78	↔	Hold	1.43
SKPC.CA	SIDI KERIR PET/d	8.06	7.80	7.50	8.50	9.17	↑	Hold	7.80
AUTO.CA	AUTO GHABBOUR /d	3.05	2.70	2.55	3.08	3.25	↑	Hold	2.70
EMFD.CA	EMAAR MISR DEV/d	2.49	2.40	2.30	2.62	2.80	↔	Hold	2.30
ORHD.CA	ORASCOM EGYPT/d	3.90	3.85	3.70	4.13	4.50	↔	Hold	3.85
ESRS.CA	EZZ STEEL/d	7.45	7.28	7.00	8.33	8.60	↔	Hold	7.00
OIH.CA	ORASCOM INVESTMENT HOLDING /d	0.554	0.545	0.530	0.570	0.590	↔	Hold	0.530
EXPA.CA	EXPORT DEVELOPMENT BANK /d	13.000	12.500	12.000	14.000	14.400	↑	Hold	12.000
IRON.CA	EGYPTAIN IRON & STEEL /d	3.45	3.34	3.05	3.75	4.10	↑	Hold	3.05
DSCW.CA	DICE SPORT AND CASUAL WEAR /d	1.580	1.530	1.420	1.700	1.810	↔	Hold	1.530
BTFH.CA	BELTONE FINANCIAL HOLDING /d	2.920	2.840	2.660	3.150	3.350	↔	Hold	2.660

Guidelines



Bullish



Bearish



Neutral

Trend: (Upgrade, Downgrade): Change in trend color refers to upgrade or downgrade in the trend relative to the previous trend direction. E.g. change from "↓ Down" to "↔ Flat" is considered an upgrade and vice versa.

Buy: Buy the full position.

P.Buy: Buy portion of a position

Hold: Don't Buy or sell.

P.SELL: Sell portion of a position.

Sell: Sell the full position.

Stop Loss: Completely exit the position (or) Re-entry in cases of Selling.

Disclaimer

This report has been prepared according to the general data available for public, in accordance with the professional standards applied in that career to the best knowledge of the reporter. The recommendations mentioned are a guiding tool representing a professional opinion, and not granting any profits, consequently it is not obligatory for our valued customers and investors. Pioneers Securities©, Egypt shall not be liable for any direct, indirect, incidental, or consequential damages, including limitation losses, lost revenues, or lost profits that may result from these materials. Republishing this report or any of its contents is subject to prior approval; referring to the source is a must. Opinions expressed are subject to change without notice and may differ or be contrary to the opinions or recommendations of Pioneers Securities©, Egypt Research or the opinions expressed by other business areas or groups of Pioneers Securities©, Egypt as a result of depending solely on the historical technical behavior (price and volume).

Technical Analysis Department

Saleh Nasser

Chief Technical Strategist

Ahmed Hassan

Senior Technical Analyst

Dina Fahmy

Senior Technical Analyst

Tips on reading the report

The first page includes an analysis of two major indices in the Egyptian Stock Market; the norm is that we will analyze both the EGX 30 and 70, but sometimes we will compare the EGX 30 to its 50 counterpart if there is important information in this comparison. We also use the Hermes Last Index interchangeably with the EGX 30. The .HRMSL index has an important edge; it uses last prices instead of VWAP. First thing our clients should do is to read the indices analysis carefully to have a clear understanding on our overall view.

The second page includes stocks that broke out beyond their resistance levels, and those that violated their support levels. It also includes stocks that are testing their support levels and those that are testing their resistance. This analysis is important and it is the core of our recommendations. It is important to note though that not all stocks that are testing their support levels are bullish, and not all that are testing their resistance levels are bearish. To make it easier for our clients, we have placed a bull face 🐂 if we consider the stock under study bullish, and a bear face 🐻 if we consider it bearish. We also added a big bullet 🟩 if we are neutral.

It is important to note that you might find a stock that we consider bullish in our analysis (in the breakouts/testing section) but it remains as a hold or partial sell in the table. The conflict here is that the table is more conservative. This will not be an issue with our clients, because our analysis will explain why we are being bullish/bearish on the stock.